



Roxtec HD BG™ -läpiviennit

Potentiaalintasaavat ja maadoittavat korkeatiheyksiset läpiviennit.

Roxtec HD BG™ -läpiviennit ovat armeerattujen ja metalliverhoitujen kaapelien läpivientiiivisteitä ankariin oloihin ja vaarallisille alueille. Kaapeliläpivientiin mahtuu jopa 32 kaapelia aukkoa kohti. Siinä on 316L-teräskehys ja Roxtec BG™ -tiivistysmoduulit, jotka sopivat erikokoisiin kaapeleihin.



- Jyrsijäsuojattu
- Korroosiosuojattu
- Kevyt
- Tilatehokas
- Sopii kaapeleille joissa on liitin

Tuotteen ominaisuudet



IP/UL NEMA



Sähköturvallisuus

Asennusrakenne



Kaapit ja kotelot

Luokitukset ja sertifiointit

Tiiviys

- IP 66/67, UL/NEMA 4,4X,12,13

Tuki

- Potentiaalintasaus ja maadoitus

Kehyksen mitat

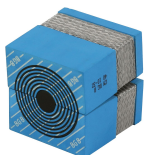
mm/kg

Alla olevat kehysvaihtoehdot ovat vain osa valikoimastamme. Kattava valikoima kehyksiä ja kokoonpanoja löytyy osoitteesta [roxtec.com](https://www.roxtec.com).

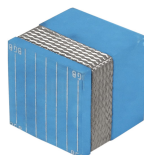
Otsikko	Kehysaukot	Pakkaustila	Ulkomitat WxHxD	Aukon mitat w x h	Paino	Tuoteno
HD 16 FRAME ASSEMBLY AISI 316	1	40 x 160	83.8 x 236 x 60	64(+1/-0.5) x 216(+1/-0.5)	1.6	193084
HD 32 FRAME ASSEMBLY AISI316	2	40 x 160	130 x 236 x 60	110(+1/-0.5) x 216(+1/-0.5)	2.3	109238

Tiivistyskomponenttien tiedot

Tiivistyskomponentit



CM BG™ Multidiameter™ -moduulit



CM BG™ -umpimoduuli



Roxtec-asennusrasva

Lisätietoja on osoitteessa [roxtec.com](https://www.roxtec.com).



Valmiiksi määritetyt läpivientisarjat

mm/kg



HD 16/16 BG



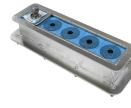
HD 32/8 BG B KIT



HD 32/32 BG B KIT



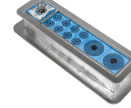
HDLC/24+2 BG



HD 16/4 BG



HD 32/20 BG B KIT



HD 16/10 BG

Otsikko	Kokoonpano	Ulkomitat WxHxD	Aukon mitat w x h	Paino	Tuotenro
HD 16/16 BG	16x (3.5-16.5)	83.8 x 236 x 60	64(+1/-0.5) x 216(+1/-0.5)	2	193104
HD 32/8 BG B KIT	8x (9.5-32.5)	130 x 236 x 60	110(+1/-0.5) x 216(+1/-0.5)	3.3	120373
HD 32/32 BG B KIT	32x (3.5-16.5)	130 x 236 x 60	110(+1/-0.5) x 216(+1/-0.5)	3.5	120374
HDLC/24+2 BG	2x (24.0-54.0), 24x (3.5-16.5)	378 x 120 x 94	366(+1/-1) x 108(+1/-1)	5.6	173280
HD 16/4 BG	4x (9.5-32.5)	83.8 x 236 x 60	64(+1/-0.5) x 216(+1/-0.5)	2	193105
HD 32/20 BG B KIT	4x (9.5-32.5), 16x (3.5-16.5)	130 x 236 x 60	110(+1/-0.5) x 216(+1/-0.5)	3.4	120376
HD 16/10 BG	2x (9.5-32.5), 8x (3.5-16.5)	83.8 x 236 x 60	64(+1/-0.5) x 216(+1/-0.5)	2	198299

The product information provided by Roxtec does not release the purchaser of the Roxtec system, or part thereof, from the obligation to independently determine the suitability of the products for the intended process, installation and/or use.

Roxtec gives no guarantee for the Roxtec system or any part thereof and assumes no liability for any loss or damage whatsoever, whether direct, indirect, consequential, loss of profit or otherwise, occurred or caused by the Roxtec systems or installations containing components not manufactured by an authorized manufacturer and/or occurred or caused by the use of the Roxtec system in a manner or for an application other than for which the Roxtec system was designed or intended.

Roxtec expressly excludes any implied warranties of merchantability and fitness for a particular purpose and all other express or implied representations and warranties provided by statute or common law. User determines suitability of the Roxtec system for intended use and assumes all risk and liability in connection therewith. In no event shall Roxtec be liable for indirect, consequential, punitive, special, exemplary or incidental damages or losses.

The Roxtec products are offered and sold in accordance with the conditions of the Roxtec General Terms of Sales. The latest version of the Roxtec General Terms of Sales can be downloaded from <https://www.roxtec.com/en/about-us/about-roxtec/general-terms-of-sales/>

We reserve the right to make changes to the product and technical information without further notice. Any errors in print or entry are no claims for indemnity. The content of this publication is the property of Roxtec International AB and is protected by copyright.

This document was generated on: 2024-04-23